

# Industrial Applications

## BRIQUETTER MODELS

250 / 600 / 1000

Compact, cost-efficient ARS industrial models provide impressive performance – up to 3,200 pounds of scrap per hour – with rugged features including:

- Integrated fluid collection and pumping system
- Steel belt take-away conveyors
- Heavy-duty frames
- Allen Bradley PLCs
- Parker valves and pumps
- Large-capacity hoppers



RST600

## SPECIFICATIONS

BRIQUETTER MODEL		RST 250	RST 600	RST 1000
Max Capacity (lbs/hr)*	Aluminum	250 (113 kg)	600 (272kg)	1000 (454 kg)
	Cast Iron/Steel	500 (227 kg)	1200 (545 kg)	2000 (453 kg)
	Brass/Copper	750 (340 kg)	1800 (816 kg)	3000 (1361 kg)
Briquette Size (diameter x length)		2.75" x 3"	2.75" x 3"	3.5" x 3.5"
Motor		10 hp	20 hp	40 hp
Main Cylinder Bore		8"	8"	10"
Max Face Pressure		30,500 psi	42,427 psi	40,744 psi
Total Force Available		91 tons	126 tons	196 tons
Max System Pressure		3,600 psi	5,000 psi	5,000 psi
Electrical (460 V 3-phase)		60 amp	60 amp	100 amp
Machine Weight (pounds)		4,200 (1905 kg)	5,000 (2358 kg)	8,500 (3855 kg)

\*Production is based on an average input density. If the input density is lower, the production will be less than the throughput stated. Production numbers can be guaranteed if a sample is run



APPLIED  
RECOVERY SYSTEMS



RST1000

# ARS

APPLIED  
RECOVERY SYSTEMS



Vertical Axis Crusher feeding an RST600

## Options To Meet Your Needs

We make it easy to create the perfect Briquetter features. ARS offers optional features

- Custom conveyors
- Swarf packages
- Shredders
- Screw augers
- Extended fluid collection pans
- Special agitators for hard-to-feed
- Custom-engineered systems
- Box dumpers
- Scales
- Fluid filtration systems
- Wringers

## World Wide Industries Served

Aerospace, Automotive, Military, Plumbing, Optical, Tool and  
Hardware Manufacturing, Scrap Yards, Brokers, and more!

\* Applied Recovery Systems disclaims any responsibility for errors that may be contained on this brochure as errors in information may occur and information may become dated.



# Total Customer Support



**Remote Diagnostics**



**Phone Support**

You can count on ARS for any additional support you need. We typically have every component in stock and qualified service personnel on hand to correct any problem. Plus, our strategic alliance with service organizations across the country provides maintenance in your area. No matter where you are, we're there for you!

## Replacement Parts On The Shelf



**Reduced Material Handling Costs**



**Easier Shipment**



**Ingot Replacement Savings**

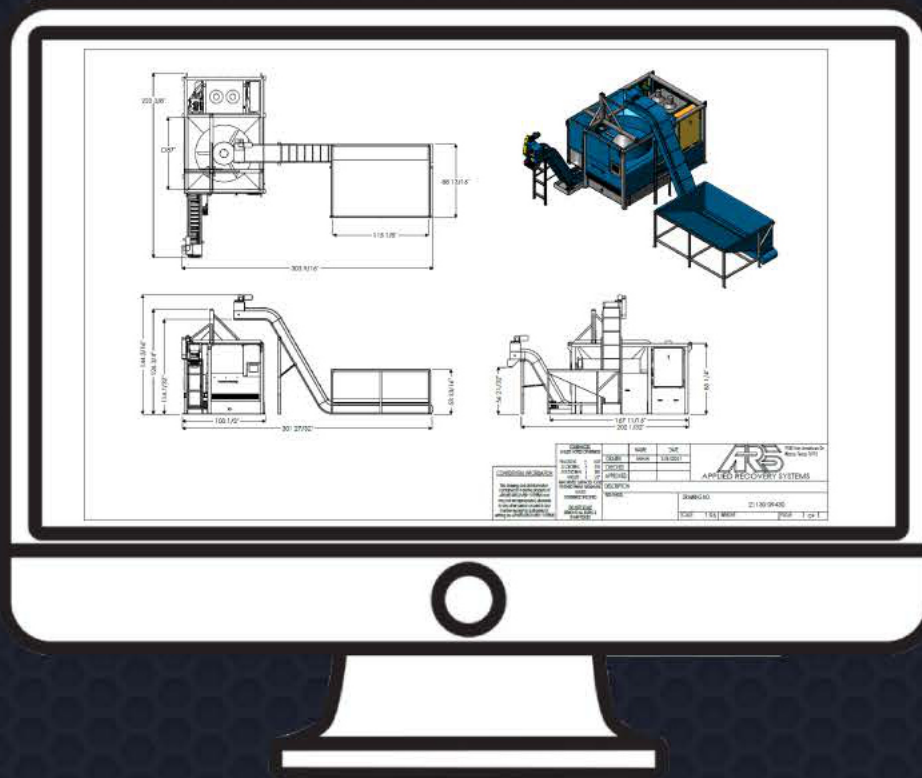


**Coolant Recovery**

**ARS**  
APPLIED  
RECOVERY SYSTEMS

# Concept to Reality

**Expanding an existing system or starting from the ground up? Applied Recovery Systems can use its vast experience in the custom Briquetting world to work with your Company to create a system by providing layout drawings and renderings to ease the process.**





# ARS Advantages

Applied Recovery Systems can convert a manufacturing cost into a profit center. With several models in the lineup to choose from, there's a Recovery Systems Technology Briquetter matched to your needs.

**ARS BRIQUETTERS** transform ordinary industrial turnings, filings, chips, clippings—even metallic dust—into dense, economically processed briquettes that typically command prices much greater than non-compacted scrap. But increasing your profits is only part of the advantage.

- Provide lower transportation costs
- Provide lower storage space requirements for scrap metal, increasing revenue-producing manufacturing floor space
- Facilitate in the removal and recovery of cutting fluids through intense pressure and compaction
- Reduce overall material handling cost by reducing labor/equipment usage.
- Minimize the hazardous liability exposure associated with the transportation of loose turnings contaminated with cutting fluids
- Help to clean up and consolidate scrap metal handling areas in the shop, allowing for a clean presentation throughout.

## A.R.S. Competitive Edge

Our top competitive edge is that we have more installations than any other manufacturer, demonstrating the better option for briquetting!

- Average lead time: 7-9 weeks
- Free or low cost sampling
- Extensive training and support
- Our equipment is easy to maintain, operate, service, and clean!
- Competitive pricing without sacrificing quality
- 24-48 hour response time for parts and service
- Allen Bradley or IFM controls
- Red Lion touchscreen control panel
- Integral cutting fluid recapturing pan and pump
- Integral cutting fluid filtration system (optional)
- Robust machine with the smallest footprint in the industry
- In-stock items available in most cases for quick delivery



Scan to view our Website





# Foundry Applications

## BRIQUETTER MODELS

1500 / 2000 / 2500 / 3000 / 4000

High-production ARS foundry units deliver both the flexibility to process a wide range of different metals and the capacity to meet demanding throughput requirements. In addition to standard ARS features, Foundry Models offer:

- Horsepower controlled variable displacement pumps to boost energy efficiency
- Parker Hannifin valve blocks with poppets to minimize hydraulic shock maximum compression
- Optional tooling size on all briquetters for increased face pressure
- Control diagnostics

### SPECIFICATIONS

Briquetter Model*	RST 1500	RST 2000	RST 2500	RST 3000	RST 4000
Max Capacity (lbs/hr) Aluminum	1500 (680 kg)	2000 (907 kg)	2500 (1134 kg)	3000 (1361 kg)	4000 (1814 kg)
Cast Iron/Steel	3000 (1361 kg)	4000 (1814 kg)	5000 (2268 kg)	6000 (2721 kg)	8000 (3628 kg)
Brass/Copper	4500 (2041 kg)	6000 (2721 kg)	7500 (3402 kg)	8500 (3856 kg)	11000 (4990 kg)
Briquette Size (diameter x length)	4.5" x 4.5"	4.5" x 4.5"	4.5" x 4.5"	5" x 5"	6" x 6"
Motor	40 hp	60 hp	75 hp	125 hp	125 hp
Main Cylinder Bore	14"	14"	14"	16"	16"
Max Face Pressure	48,395 psi	48,395 psi	48,395 psi	51,235 psi	35,500 psi
Total Force Available	385 tons	385 tons	385 tons	503 tons	—
Max System Pressure	5,000 psi	5,000 psi	5,000 psi	5,000 psi	5,000 psi
Electrical (460 V 3-phase)	100 amps	125 amps	150 amps	250 amps	250 amps
Machine Weight (pounds)	17,000 (7711 kg)	19,000 (8618 kg)	19,000 (8618 kg)	24,500 (11,113 kg)	25,500 (11,567 kg)

\* Production is based on an average input density. If the input density is lower the production will be lower than the throughput stated. Production numbers can be guaranteed if a sample is run.



ARS Briquetters are simple to operate. Employees require little training and become proficient in minimal time.

**ARS**  
APPLIED  
RECOVERY SYSTEMS

